



TruckingHR Canada
**Learning and
Development
Centre**

**Commercial Transport Truck Operator
Driving Assessment Guide**



 **TruckingHR
Canada**

APRIL 2024

ABOUT TRUCKING HR CANADA

As a national, non-profit organization, Trucking HR Canada (THRC) advances modern HR solutions for the trucking and logistics workforce. One of our strategic priorities is to make a company's job easier by delivering a comprehensive collection of up-to-date guides, reports, templates and more to support effective human resources management and recruitment and retention efforts.

Visit **truckinghr.com** to find out more.

GENERAL DISCLAIMER

The information contained in this document informs and supports the adoption of best practices derived through input from industry experts. It does not constitute legal advice or guidance on how to comply with applicable safety regulations, standards, or insurance requirements. Trucking HR Canada, and all content contributors, bear no responsibility for any circumstances arising out of or related to the adoption, or decision not to adopt, any of the recommendations contained in this document.

BACKGROUND

Trucking HR Canada (THRC) publishes a National Occupational Standard for Commercial Transport Truck Operators (NOS-O). The NOS-O defines the knowledge, skills, and abilities ("competencies") required for this occupation.

This document is a supplemental resource to the NOS-O. For the full suite of supplemental resources, visit **truckinghr.com**.

ACKNOWLEDGMENT

THRC would like to extend our sincere thanks to the following organizations for sharing their time and expertise to the development of this resource:

AIG Insurance Company of Canada
Alberta Motor Transport Association
Armour Transportation
Arrow Transportation Systems Inc.
Association du Camionnage du Québec
Bison Transport Inc.
C.A.T Inc.
Centre de Formation du Transport Routier de
Saint-Jérôme (CFTR)
Challenger
CIFFA
Eassons Transport Ltd.
Infrastructure Health and Safety Association
(IHSA)

Laidlaw Carriers Van
KAG (Kenan Advantage Group, Inc.)
Kriska Holdings Ltd.
KRTS Transportation Specialists Inc.
Manitoba Trucking Association
Northbridge Insurance
Northern Resource Trucking
Old Republic Insurance Canada
Private Motor Truck Council of Canada
Saskatchewan Trucking Association
South Country Co-op Limited
Steve's Livestock Transport
Tandet

FUNDER ACKNOWLEDGEMENT

Funded in part by the government of Canada's Sectoral Workforce Solutions Program.

Canada

The opinions and interpretations in this publication are those of the author and do not necessarily reflect those of the Government of Canada.

TABLE OF CONTENTS

Purpose of this Guide	1
Who can use this Guide	1
How to use this Guide	1
Limitations of this Guide	1
Performing an Assessment	2
Assessor Scoresheet	2
Score Sheets	3
Detailed Scoring Information	6
On-road Skill Assessment Task 1 - Driving along on urban roadways	6
On-road Skill Assessment Task 2 - Driving through curves	8
On-road Skill Assessment Task 3 - Crossing uncontrolled intersections	9
On-road Skill Assessment Task 4.1 - Approaching controlled intersections	10
On-road Skill Assessment Task 4.2 - Driving through controlled intersections	11
On-road Skill Assessment Task 5 - Stopping at controlled intersections	12
On-road Skill Assessment Task 6 - Turning at intersections	13
On-road Skill Assessment Task 7 - Driving through circular intersections	15
On-road Skill Assessment Task 8 - Lane changes	16
On-road Skill Assessment Task 9 - Entering an expressway	18
On-road Skill Assessment Task 10 - Driving along an expressway	20
On-road Skill Assessment Task 11 - Exiting an expressway	22
On-road Skill Assessment Task 12 - Roadside stop	24
On-road Skill Assessment Task 13 - Railway crossing	26
Task 1 – Backing a tractor-trailer	28
Off-road Skill Assessment Task 1.1 - Straight-line backing a tractor-trailer	29
Off-road Skill Assessment Task 1.2 - Offset backing a tractor-trailer	31
Off-road Skill Assessment Task 1.3 - Alley-dock backing a tractor-trailer	33
Off-road Skill Assessment Task 1.4 - Parallel parking a tractor-trailer	35
Task 2 – Tractor-trailer coupling and uncoupling	37
Off-road Skill Assessment Task 2.1 - Coupling a tractor-trailer	37
Off-road Skill Assessment Task 2.2 - Uncoupling a tractor-trailer	41



PURPOSE OF THIS GUIDE

This guide describes methods for **evaluating and assessing a commercial transport truck operator trainee's skills during a road test** and provides metrics for consistent scoring. It addresses on-road driving and off-road tasks, including tractor-trailer backing, tractor-trailer coupling, and tractor-trailer uncoupling.

This guide is based on the competencies outlined in the National Occupational Standard for Commercial Transport Truck Operators (NOS-O).

WHO CAN USE THIS GUIDE

This guide is designed to be used by instructors, trainers, mentors, coaches, and evaluator/assessors, for assessing commercial transport truck operators at companies or training/testing facilities.

Administrators of truck driving schools and driver licencing agencies can also use this guide to inform administrative processes.

HOW TO USE THIS GUIDE

This guide can be used to confirm the skills of a commercial transport truck operator trainee following entry-level training (ELT) or throughout occupational-level training (OLT), finishing, and onboarding.

Using the **Scoresheets** (page 3,4 & 5) the instructor, trainer, mentor, coach, or assessor directs the trainee to complete the tasks and maneuvers listed. While observing the trainee's completion of the tasks and sub-tasks, score results are recorded. To help score the trainee, a detailed descriptions of each task can be found in the **Detailed Scoring Information Section** (page 6 to 43) of this document which has been divided into **Driving Skills** and **Off Road Skills**.

LIMITATIONS OF THIS GUIDE

Some vehicles and operational settings may require some alterations or additions to the core steps listed in this guide. Use this guide as base and add or alter it as appropriate. If you make changes, you and or your team may wish to review the NOS-O to ensure it continues to align with your updated version.

If you have questions or are interested in more information, contact THRC info@truckinghr.com



PERFORMING AN ASSESSMENT

You can use a driving assessment at any stage of training after an individual starts to drive.

You can complete skill assessments in stages over time or as a single exercise involving all items in sequence.

The expected level of proficiency or a successful score following an assessment will depend on the trainee's stage of learning. You may opt to set target scores for trainees at each stage (e.g. new, novice, experienced) to identify the number of errors (major or minor offences) the trainee may make. This evaluation/assessment can also be used to identify areas that require more training and instruction. Before beginning your assessment, make sure the trainee is aware of the skills that will be covered.

During an assessment, the assessor will observe without providing any direction or coaching.

ASSESSMENT TIPS

- Continue to assess the trainee's driving skills as they drive between the specific manoeuvres in the assessment.
- You may also want to include additional workplace-specific and/or vehicle-specific procedures in the assessment. Review the Guide to make these changes before using it.
- Selecting a suitable site for an assessment is important for consistency and validity of the results. Dimensions are provided for each backing and parking maneuver; confirm your site meets the space requirements before beginning the assessment.

ASSESSOR SCORESHEET

Capture the results of each assessment on a single-page scoresheet as shown below. When the assessor is satisfied that a task is completed correctly, mark the box in the grey row beside the task to indicate the task was completed without error.

Use the detailed scoring information in the tables of this guide to determine what errors are made by a trainee and judge the severity of each error. Mark minor errors with **1**, and major errors with a **2**; use the box beside each sub-task to record the scores. At the end of the assessment, each sub-task box will have either no marking, **1** for a minor error, or **2** for a major error. Use the scoresheet as a reminder of the observed errors and to highlight areas where the trainee needs to improve.

Total the errors on the scoresheet for the overall assessment result; compare final scores with the targets your company set for each task being assessed.



SCORE SHEETS

On-Road Driving Evaluation

1 Driving along (urban)	
1 Observe and monitor	
2 React to conditions	
3 Monitor blind spots	
4 Monitor vehicle	
5 Drives courteously	
6 Manage speed and distance	
7 Road and lane position	
8 Signs and pavement marking	
9 Integrate with traffic	
10 Smooth operation	
11 Steering grip	
12 Clutch/ transmission	
2 Curves	
1 Prepare	
2 Travel through	
3 Steer and lane position	
4 Traffic check	
3.1 Cross uncontrolled intersection	
1 Prepare	
2 Travel through	
3 Steer and lane position	
4 Traffic check	
3.2 Approach controlled intersection	
1 Prepare	
2 Traffic check	
3 Crossing	
4 Road and lane position	
3.3 Drive through controlled intersection	
1 Prepare	
2 Traffic check	
3 Traffic control signal	
4 Manage speed and distance	
5 Crossing	
6 Road and lane position	
4 Stop at controlled intersections	
1 Traffic control signal	
2 Manage speed and distance	

3 Crossing	
4 Road and lane position	
5 Clutch and transmission	
5 Intersection turn	
1 Lane selection	
2 Signal use	
3 Traffic check	
4 Vehicle spacing	
4 Vehicle position	
5 Lane selection	
6 Signal cancellation	
6 Circular intersection	
1 Prepare	
2 Traffic check	
3 Traffic signs/ pavement marking	
4 Manage speed and distance	
5 Road and lane position	
7 Lane change	
1 Traffic check	
2 Signal use	
3 Vehicle spacing	
4 Lane change execution	
5 Signal cancellation	
8 Enter expressway	
1 Traffic Check	
2 Manage speed and distance	
3 Traffic signs/ pavement marking	
4 Signal use	
5 Road and lane position	
6 Adjust speed	
7 Signal cancellation	
8 Clutch and transmission	
9 Driving along (expressway)	
1 Observe and monitor	
2 Monitor blind spots	
3 Monitor vehicle	
4 Drives courteously	
5 Monitor speed and distance	



6	Road and lane position	
7	Signs and pavement marking	
8	Integrate with traffic	
9	Smooth operation	
10	Steering grip	
11	Clutch and manual transmission	
10	Exit expressway	
1	Traffic check	
2	Manage speed and distance	
3	Signal use	
4	Road and lane position	
5	Exit ramp	
5	Adjust speed	
6	Signal cancelation	
8	Clutch/ transmission	
11	Roadside stop	
1	Traffic check	
2	Manage speed and distance	
3	Signal use	
4	Stop position	
4	Secure vehicle	
5	Signal use	
6	Start	
7	Signal use	
8	Traffic check	
9	Manage speed and distance	
10	Signal use	
11	Traffic check	
12	Clutch/ transmission	
12	Railway crossing	
1	Traffic check	
2	Manage speed and distance	
3	Hazard lamps	
4	Attention	
5	Signs and signals	
6	Stop position	
7	Traffic check	
8	Speed and distance	
9	Hazard lamps	



Off-Road Task Evaluation

13	Straight line backing	
1	Set-up	
2	Pull-up	
3	Encroachment	
4	Final position	
5	Elapsed time	
14	Offset backing	
1	Set-up	
2	Pull-up	
3	Encroachment	
4	Final position	
5	Elapsed time	
15	Alley dock backing	
1	Set-up	
2	Pull-up	
3	Encroachment	
4	Final position	
5	Elapsed time	
16	Parallel parking	
1	Set-up	
2	Pull-up	
3	Encroachment	
4	Final position	
5	Elapsed time	
17	Tractor trailer coupling	
1	Inspect 5th wheel	
2	Align	
3	Secure	
4	Check alignment	
5	Check height	
6	Inspect trailer	
7	Chock trailer wheels	
8	Engage 5th wheel	
9	Test 5th wheel	
10	Confirm 5th wheel lock	
11	Connect all systems	
12	Raise landing gear	
13	Check brake system	

18	Tractor trailer uncoupling	
1	Park trailer	
2	Secure brakes	
3	Check ground/ use supports	
4	Lower landing gear	
5	Remove connections	
6	Disengage 5th wheel	
7	Drop suspension (option)	



DETAILED SCORING INFORMATION

On-Road Skill Assessment TASK 1 - Driving along on urban roadways

Use the details in the Error and Severity columns to complete a scoresheet for each trainee (score minor errors with a **1**, major errors with a **2**).

SUB-TASK	ERRORS	SEVERITY
1. Observe and monitor Scans the roadway and traffic conditions in front, beside, and behind every 5 to 10 seconds.	Doesn't conduct adequate checks of conditions in front, beside, or behind.	MAJOR
	Fails to notice conditions or hazards.	MAJOR
2. React to conditions Notices conditions that may require a change in speed or lane position and adjusts smoothly.	Reacts too late to changing conditions.	MAJOR
	Over-reacts to changing conditions.	MINOR
3. Monitor blind spots Checks blind spots regularly and tracks vehicles entering and leaving blind spots.	Is not aware of blind spots.	MAJOR
	Fails to check blind spots regularly.	MAJOR
	Fails to adequately track vehicles in blind spots.	MINOR
4. Monitor vehicle Scans the instrument panel every 10 to 30 seconds.	Doesn't conduct adequate checks of vehicle conditions.	MINOR
	Takes eyes off road too long to check instrument panel.	MINOR
5. Drive courteously Recognizes their responsibilities for sharing a workplace with the public.	Refuses to give space or be courteous toward other motorists.	MAJOR
	Intimidates other motorists or fails to notice action that may be risky for others.	MAJOR
6. Manage speed and distance Manages speed and following distance to allow adequate time to observe, react, and maneuver vehicle if necessary.	Follows too closely.	MAJOR
	Drives with excessive speed.	MAJOR
	Fails to leave enough space when stopping behind another vehicle.	MINOR

SUB-TASK	ERRORS	SEVERITY
7. Road and lane position Selects the correct lane and stays near the center of the lane. Drives in the right-most lane unless there is an obstruction or other need to move over.	Drives in the wrong lane or fails to stay right as much as possible.	MAJOR
	Fails to drive near the center of the lane.	MINOR
	Drives in a prohibited lane.	MAJOR
8. Signs and pavement markings Pays attention to road signs and pavement markings.	Fails to notice road sign.	MINOR
	Fails to notice pavement marking.	MINOR
9. Integrate with traffic Avoids blocking other vehicles and operates at appropriate speed.	Impedes other vehicles unnecessarily.	MINOR
10. Smooth operation Operates vehicle controls smoothly.	Operates vehicle in a rough or erratic manner.	MAJOR
11. Steering grip Maintains two-handed grip on the steering wheel as much as practicable.	Uses improper grip.	MINOR
12. Clutch and manual transmission Operates clutch, selects gears correctly, and shifts smoothly.	Over-speeds engine.	MAJOR
	Lugs engine.	MAJOR
	Misses gears or selects wrong gear.	MAJOR
	Clashes gears.	MAJOR



On-Road Skill Assessment TASK 2 - Driving through curves

Use the details in the Error and Severity columns to complete a scoresheet for each trainee (score minor errors with a **1**, major errors with a **2**).

SUB-TASK	ERRORS	SEVERITY
1. Prepare Conducts a visual assessment of the curve as soon as it is visible, check for signs and pavement markings. Checks traffic in front, beside, and behind.	Fails to notice curve ahead of time.	MINOR
	Fails to check for signs or pavement markings, or fails to read them correctly.	MINOR
	Fails to check traffic.	MINOR
2. Travel through Adjusts speed before the curve starts, manages speed and distance to vehicle in front.	Adjusts speed too late or adjusts speed while in curve.	MAJOR
	Exceeds speed limit or speed advisory.	MAJOR
	Travels too close to other vehicles.	MAJOR
	Travels too fast for vehicle or road conditions.	MAJOR
3. Steer and lane position Positions vehicle to stay in lane and keeps two hands on wheel.	Fails to maintain proper grip on steering wheel.	MINOR
	Fails to keep vehicle within lane markings.	MAJOR
4. Traffic check Monitors traffic during curve.	Doesn't conduct adequate checks of conditions in front, beside, or behind.	MINOR

On-Road Skill Assessment TASK 3 - Crossing uncontrolled intersections

Use the details in the Error and Severity columns to complete a scoresheet for each trainee (score minor errors with a **1**, major errors with a **2**).

SUB-TASK	ERRORS	SEVERITY
1. Prepare Conducts a visual assessment of the intersection as soon as it is visible, checks for signs and pavement markings and checks sight lines.	Fails to notice intersection.	MAJOR
	Fails to check for signs or pavement markings, or fails to read them correctly.	MINOR
	Fails to scan for cross traffic.	MINOR
2. Traffic check Scans the roadway, traffic pattern signs, pavement markings and controls to confirm intersection can be crossed safely.	Fails to adequately check conditions in front, beside, or behind.	MAJOR
	Fails to notice or react to traffic.	MAJOR
3. Crossing Executes crossing at appropriate speed.	Travels at excessive speed.	MINOR
	Slows down unnecessarily.	MINOR
4. Road and lane position Stays in the correct lane and stays near the center of the lane.	Crosses in the wrong lane or fails to stay near the center of the lane.	MAJOR



On-Road Skill Assessment TASK 4.1 - Approaching controlled intersections

Use the details in the Error and Severity columns to complete a scoresheet for each trainee (score minor errors with a **1**, major errors with a **2**).

SUB-TASK	ERRORS	SEVERITY
1. Prepare Conducts a visual assessment of the intersection as soon as it is visible, checks for signs and pavement markings.	Fails to notice intersection in time.	MINOR
	Fails to check for signs or pavement markings, or fails to read them correctly.	MINOR
	Fails to scan traffic pattern.	MINOR
2. Traffic check Scans the roadway, traffic pattern signs, and pavement markings to confirm intersection can be crossed safely	Fails to adequately check conditions in front, beside, or behind.	MAJOR
	Fails to notice or react to traffic.	MAJOR
3. Traffic control signal Watches and observes traffic signals carefully.	Fails to properly notice or react to traffic control signal.	MINOR
	Proceeds against a signal.	MAJOR



On-Road Skill Assessment TASK 4.2 - Driving through controlled intersections

Use the details in the Error and Severity columns to complete a scoresheet for each trainee (score minor errors with a **1**, major errors with a **2**).

SUB-TASK	ERRORS	SEVERITY
4. Manage speed and distance Manages speed and following distance to allow adequate time to observe, react, and manoeuvre vehicle if necessary.	Follows too closely.	MAJOR
	Drives with excessive speed.	MAJOR
	Fails to leave enough space when stopping behind another vehicle.	MINOR
5. Crossing Executes crossing at appropriate speed.	Travels at excessive speed.	MINOR
	Slows down unnecessarily.	MINOR
6. Road and lane position Stays in the correct lane and stays near the center of the lane.	Crosses in the wrong lane or fails to stay near the center of the lane.	MAJOR



On-Road Skill Assessment TASK 5 - Stopping at controlled intersections

Use the details in the Error and Severity columns to complete a scoresheet for each trainee (score minor errors with a **1**, major errors with a **2**).

SUB-TASK	ERRORS	SEVERITY
1. Traffic control signal Watches and observes traffic signals carefully.	Fails to properly notice or react to traffic control signal.	MINOR
	Proceeds against a signal.	MAJOR
2. Manage vehicle distance and position Maintains distance to other vehicles (able to see the rear tires of the vehicle in front).	Fails to leave enough space when stopping behind another vehicle.	MAJOR
	Leaves too much space in front.	MINOR
	Blocks crosswalk or impedes a pedestrian or other road user.	MAJOR
3. Crossing Executes crossing at appropriate speed.	Travels at excessive speed.	MINOR
	Slows down unnecessarily.	MINOR
4. Road and lane position Stays in the correct lane and stays near the center of the lane.	Crosses in the wrong lane or fails to stay near the center of the lane.	MAJOR
5. Clutch and manual transmission Operates clutch, selects gears correctly, and shifts smoothly.	Over-speeds engine.	MAJOR
	Lugs engine.	MAJOR
	Misses gears or selects wrong gear.	MAJOR
	Clashes gears.	MAJOR

On-Road Skill Assessment TASK 6 - Turning at intersections

Use the details in the Error and Severity columns to complete a scoresheet for each trainee (score minor errors with a **1**, major errors with a **2**).

SUB-TASK	ERRORS	SEVERITY
1. Lane selection Selects the correct lane for starting the turn.	Fails to select the best lane for the turn.	MINOR
	Turns from a prohibited lane.	MAJOR
2. Signal use Activates signal at least 2-3 seconds before turn and keeps signal on through the turn.	Signal is not activated.	MAJOR
	Signal is activated too late.	MINOR
	Signal does not remain activated during entire turn.	MINOR
3. Traffic check Scans the roadway and traffic pattern to plan when to execute the turn.	Fails to adequately check conditions in front, beside, or behind.	MAJOR
	Fails to notice another vehicle that must be monitored or may be affected during the turn.	MAJOR
4. Vehicle spacing Maintains safe following distance during turn and accurately judges distance needed in target lane.	Allows following distance to get too short before turn.	MINOR
	Slows down unnecessarily before turn.	MINOR
	Starts turn without adequate space in target lane.	MAJOR
	Impedes another vehicle during the turn.	MAJOR
	Causes other motorists to react in a risky manner.	MAJOR
5. Vehicle position Steers through the intersection following a proper path, based on vehicle off-tracking and clearance requirements.	Steers too tight for turn.	MAJOR
	Steers too wide for turn.	MINOR
6. Lane selection Selects the correct lane for completing the turn.	Fails to select the best lane for completing the turn.	MINOR
	Turns into prohibited lane.	MAJOR

SUB-TASK	ERRORS	SEVERITY
<p>7. Signal cancellation</p> <p>Cancels turn signal within 4 seconds after completing turn.</p>	Fails to cancel turn signal in time.	MINOR
<p>8. Clutch and manual transmission</p> <p>Operates clutch, selects gears correctly, and shifts smoothly.</p>	Over-speeds engine.	MAJOR
	Lugs engine.	MAJOR
	Misses gears or selects wrong gear.	MAJOR
	Clashes gears.	MAJOR



On-Road Skill Assessment TASK 7 - Driving through circular intersections

Use the details in the Error and Severity columns to complete a scoresheet for each trainee (score minor errors with a **1**, major errors with a **2**).

SUB-TASK	ERRORS	SEVERITY
1. Prepare Conducts a visual assessment of the intersection as soon as it is visible, checks for signs and pavement markings.	Fails to notice intersection in time.	MINOR
	Fails to check for signs or pavement markings or fails to read them correctly.	MINOR
	Fails to scan traffic pattern.	MINOR
2. Traffic check Scans the roadway, traffic pattern signs, and pavement markings on approach.	Fails to adequately check conditions in front, beside, or behind.	MAJOR
	Fails to notice or react to traffic.	MAJOR
3. Traffic signs and pavement markings Reads and follows signs and pavement markings.	Fails to properly notice or react to traffic control signs or pavement markings.	MINOR
4. Manage speed and distance Manages speed and following distance to allow adequate time to observe, react, and manoeuvre vehicle if necessary.	Follows too closely.	MAJOR
	Drives too quickly.	MAJOR
	Drives too slowly.	MINOR
5. Road and lane position Stays in the correct lane and stays near the center of the lane.	Crosses in the wrong lane or fails to stay near the center of the lane.	MAJOR



On-Road Skill Assessment TASK 8 - Lane changes

Use the details in the Error and Severity columns to complete a scoresheet for each trainee (score minor errors with a **1**, major errors with a **2**).

SUB-TASK	ERRORS	SEVERITY
1. Traffic check Scans the roadway and traffic pattern to plan when to execute the lane change.	Fails to adequately check conditions in front, beside, or behind.	MAJOR
	Fails to notice another vehicle that must be monitored or may be affected by the lane change.	MAJOR
2. Signal use Activates signal at least 2-3 seconds before lane change.	Signal is not activated.	MAJOR
	Signal is activated too late.	MINOR
	Signal does not remain activated during entire lane change.	MINOR
3. Vehicle Spacing Maintains safe following distance in current lane and accurately judges distance needed in target lane.	Allows following distance to get too short before lane change.	MINOR
	Slows down unnecessarily before lane change.	MINOR
	Starts lane change without adequate space in target lane.	MAJOR
	Impedes another vehicle during the lane change	MAJOR
	Causes other motorists to react in a risky manner.	MAJOR
4. Lane Change Execution Changes lane where it is safe and legal to do so. Makes a smooth and deliberate lane change.	Fails to see lane marking prohibiting a lane change.	MINOR
	Changes lane where prohibited.	MAJOR
	Changes lane in intersection, near crosswalk or railway crossing	MAJOR
	Lane change is made too quickly.	MINOR
	Takes too long to change lane.	MINOR
	Steering is jerky.	MAJOR
	Gets too close to another vehicle during lane change.	MAJOR
	Fails to adjust speed after lane change.	MINOR
	Moves too far to either side within the target lane.	MINOR

SUB-TASK	ERRORS	SEVERITY
<p>5. Cancel Turn Signal</p> <p>Cancels turn signal within 4 seconds of completing lane change.</p>	<p>Leaves signal on too long</p>	<p>MINOR</p>



On-Road Skill Assessment TASK 9 - Entering an expressway

Use the details in the Error and Severity columns to complete a scoresheet for each trainee (score minor errors with a **1**, major errors with a **2**).

SUB-TASK	ERRORS	SEVERITY
1. Traffic check Scans the roadway and traffic pattern to plan when to enter expressway.	Fails to adequately check conditions in front, beside, or behind.	MAJOR
	Fails to notice another vehicle that must be monitored or may be affected.	MAJOR
2. Manage speed and distance Manages speed and following distance to allow adequate time to observe, react, and manoeuvre vehicle if necessary	Follows too closely.	MAJOR
	Drives too quickly.	MAJOR
	Drives too slowly.	MINOR
3. Traffic signs and pavement markings Reads and follows signs and pavement markings.	Fails to properly notice or react to traffic control signs or pavement markings.	MINOR
4. Signal use Activates signal at least 2-3 seconds before lane change or merge.	Signal is not activated.	MAJOR
	Signal is activated too late.	MINOR
	Signal does not remain activated during entire lane change.	MINOR
5. Road and lane position Stays in the correct lane and stays near the center of the lane.	Crosses in the wrong lane or fails to stay near the center of the lane.	MAJOR
6. Adjust speed Controls vehicle speed within the acceleration ramp to facilitate merge into traffic.	Accelerates too soon or too much to blend with traffic.	MINOR
	Accelerates late or too little to blend with traffic.	MINOR
7. Signal cancellation Cancels turn signal within 4 seconds after completing turn.	Fails to cancel turn signal in time.	MINOR

SUB-TASK	ERRORS	SEVERITY
<p>8. Clutch and manual transmission</p> <p>Operates clutch, selects gears correctly, and shifts smoothly within 4 seconds of completing lane change.</p>	Over-speeds engine.	MAJOR
	Lugs engine.	MAJOR
	Misses gears or selects wrong gear.	MAJOR
	Clashes gears.	MAJOR



On-Road Skill Assessment TASK 10 - Driving along an expressway

Use the details in the Error and Severity columns to complete a scoresheet for each trainee (score minor errors with a **1**, major errors with a **2**).

SUB-TASK	ERRORS	SEVERITY
1. Observe and monitor Scans the roadway and traffic conditions in front, beside, and behind every 5 to 10 seconds.	Doesn't conduct adequate checks of conditions in front, beside, or behind.	MAJOR
	Fails to notice conditions or hazards.	MAJOR
2. React to conditions Notices conditions that may require a change in speed or lane position and adjusts smoothly.	Reacts too late to changing conditions.	MINOR
	Over-reacts to changing conditions.	MINOR
3. Monitor blind spots Checks blind spots regularly and tracks vehicles entering and leaving blind spots.	Is not aware of blind spots.	MAJOR
	Fails to check blind spots regularly.	MAJOR
	Fails to adequately track vehicles in blind spots.	MINOR
4. Monitor vehicle Scans the instrument panel every 10 to 30 seconds.	Doesn't conduct adequate checks of vehicle conditions.	MINOR
	Takes eyes off road too long to check instrument panel.	MINOR
5. Drives courteously Recognizes their responsibilities for sharing a workplace with the public.	Refuses to give space or be courteous toward other motorists.'	MINOR
	Intimidates other motorists or fails to notice action that may be risky for others.	MAJOR
6. Manage speed and distance Manages speed and following distance to allow adequate time to observe, react, and manoeuvre vehicle if necessary.	Follows too closely.	MAJOR
	Drives with excessive speed.	MAJOR
	Fails to leave enough space behind another vehicle.	MINOR

SUB-TASK	ERRORS	SEVERITY
7. Road and lane position Selects the correct lane and stays near the center of the lane. Drives in the right-most lane unless there is an obstruction or other need to move over.	Drives in the wrong lane or fails to stay right as much as possible.	MAJOR
	Fails to drive near the center of the lane.	MINOR
	Drives in a prohibited lane.	MAJOR
8. Signs and pavement markings Pays attention to road signs and pavement markings.	Fails to notice road sign.	MINOR
	Fails to notice pavement marking.	MINOR
9. Integrate with traffic Avoids blocking other vehicles and operates at appropriate speed.	Impedes other vehicles unnecessarily.	MINOR
10. Smooth operation Operates vehicle controls smoothly.	Operates vehicle in a rough or erratic manner.	MAJOR
11. Steering grip Maintains two-handed grip on the steering wheel as much as practicable.	Uses improper grip.	MINOR
12. Clutch and manual transmission Operates clutch, selects gears correctly and shifts smoothly.	Over-speeds engine.	MAJOR
	Lugs engine.	MAJOR
	Misses gears or selects wrong gear.	MAJOR
	Clashes gears.	MAJOR



On-Road Skill Assessment TASK 11 - Exiting an expressway

Use the details in the Error and Severity columns to complete a scoresheet for each trainee (score minor errors with a **1**, major errors with a **2**).

SUB-TASK	ERRORS	SEVERITY
1. Traffic check Scans the roadway and traffic pattern to plan exit from expressway.	Fails to adequately check conditions in front, beside, or behind.	MAJOR
	Fails to notice another vehicle that must be monitored or may be affected.	MAJOR
2. Manage speed and distance Manages speed and following distance to allow adequate time to observe, react, and manoeuvre vehicle if necessary.	Follows too closely.	MAJOR
	Drives too quickly.	MAJOR
	Drives too slowly.	MINOR
3. Signal use Activates signal at least 2-3 seconds before lane change or exit.	Signal is not activated.	MAJOR
	Signal is activated too late.	MINOR
	Signal does not remain activated during entire lane change.	MINOR
4. Road and lane position Stays in the correct lane and stays near the center of the lane.	Crosses in the wrong lane or fails to stay near the center of the lane.	MAJOR
5. Exit ramp Drives onto exit ramp as soon as space is available.	Waits too long to move onto exit ramp, or moves over too slowly.	MINOR
	Gets onto exit ramp too soon or too suddenly.	MINOR
6. Adjust speed Reduces vehicle speed within the deceleration ramp.	Reduces speed while still on expressway when it is not necessary.	MINOR
	Does not adequately reduce speed on exit ramp.	MAJOR

SUB-TASK	ERRORS	SEVERITY
<p>7. Cancel turn signal</p> <p>Cancels turn signal within 4 seconds after completing turn.</p>	Fails to cancel turn signal in time.	MINOR
<p>8. Clutch and manual transmission</p> <p>Operates clutch, selects gears correctly, and shifts smoothly.</p>	Over-speeds engine.	MAJOR
	Lugs engine.	MAJOR
	Misses gears or selects wrong gear.	MAJOR
	Grinds or clashes gears.	MAJOR



On-Road Skill Assessment TASK 12 - Roadside stop

Use the details in the Error and Severity columns to complete a scoresheet for each trainee (score minor errors with a **1**, major errors with a **2**).

SUB-TASK	ERRORS	SEVERITY
1. Traffic check Observes traffic in front, to the left, right, and to the rear through the vehicle mirrors.	Fails to turn head far enough to observe traffic.	MAJOR
	Fails to use mirrors to check traffic to rear.	MAJOR
2. Manage speed and distance Maintains appropriate speed and distance from other vehicles.	Allows following distance to get too short.	MAJOR
	Impedes other vehicles during the stop.	MAJOR
3. Signal use Activates signal at least 2-3 seconds before lane change or exit.	Activates wrong turn signals.	MAJOR
	Activates turn signal too early.	MINOR
	Activates turn signal too late.	MINOR
4. Stop position Stops on the right side of the road.	Fails to stop far enough to the right.	MINOR
	Stops farther than 0.6 m from the curb.	MINOR
	Fails to prevent the vehicle from rolling.	MAJOR
	Fails to avoid obstructing other vehicles.	MAJOR
5. Secure vehicle Applies parking brakes.	Fails to apply parking brakes.	MAJOR
6. Signal use Deactivates turn signals; activates hazard warning lights.	Fails to deactivate turn signals.	MINOR
	Fails to activate hazard warning lights.	MINOR
7. Start Starts moving vehicle forward smoothly as soon as space is clear.	Starts moving too soon.	MAJOR
	Starts moving forward too late.	MINOR
	Starts aggressively/roughly.	MAJOR

SUB-TASK	ERRORS	SEVERITY
8. Signal use Activates correct turn signal.	Activates wrong turn signal.	MAJOR
	Activates turn signal too early.	MINOR
	Activates turn signal too late.	MINOR
9. Traffic check Observes traffic in front, to the left, right, and to the rear through the vehicle mirrors.	Fails to turn head far enough to observe traffic.	MAJOR
	Fails to use mirrors to check traffic in rear.	MAJOR
10. Manage speed and distance Maintains appropriate speed and distance from other vehicles.	Follows too close to other vehicles.	MAJOR
	Impedes other vehicles.	MINOR
11. Signal use Deactivates turn signal lights.	Fails to deactivate turn signal lights.	MINOR
12. Traffic check Observes traffic in front, to the left, right, and to the rear.	Fails to observe traffic.	MAJOR
13. Clutch and manual transmission Operates clutch, selects gears correctly, and shifts smoothly.	Over-speeds engine.	MAJOR
	Lugs engine.	MAJOR
	Misses gears or selects wrong gear.	MAJOR
	Grinds or clashes gears.	MAJOR



On-Road Skill Assessment TASK 13 - Railway crossing

Use the details in the Error and Severity columns to complete a scoresheet for each trainee (score minor errors with a **1**, major errors with a **2**).

SUB-TASK	ERRORS	SEVERITY
1. Traffic check Observes traffic in front, to the left, right, and to the rear through the vehicle mirrors.	Fails to turn head far enough to observe traffic.	MAJOR
	Fails to use mirrors to check traffic to rear.	MAJOR
2. Manage speed and distance Maintains appropriate speed and distance from other vehicles.	Allows following distance to get too short.	MAJOR
	Impedes other vehicles during the stop.	MINOR
3. Hazard lights Activates hazard lights when reducing speed.	Activates hazard lights too early.	MINOR
	Activates hazard lights too late.	MINOR
4. Attention Silences audio systems, radio, etc. Opens driver side window or both side windows to look and listen.	Fails to silence audio sources.	MINOR
	Fails to open one or more windows.	MINOR
5. Signs and signals Responds correctly to signs and signals.	Disobeys any sign or signal.	MAJOR
6. Stop position (if required) Stops at least 5m from the railway track or gate but close enough to see and hear.	Stops closer than 5m from track or gate.	MAJOR
	Stops too far away to be able to see and hear.	MINOR
7. Traffic check Scans traffic in front, to the left, right, and to the rear through the vehicle mirrors.	Fails to turn head far enough to observe traffic.	MAJOR
	Fails to use mirrors to check traffic to rear.	MAJOR

SUB-TASK	ERRORS	SEVERITY
8. Speed and distance Maintains appropriate speed and distance from other vehicles.	Allows following distance to get too short.	MAJOR
	Impedes other vehicles during crossing.	MINOR
9. Hazard lights Cancels hazard lights upon reaching traffic speed.	Cancels hazard lights too early.	MINOR
	Cancels hazard lights too late.	MINOR



DETAILED SCORING INFORMATION

Off-Road Skill Assessment TASK 1 - Backing a tractor-trailer

The purpose of the backing and parking evaluation/assessment is to confirm the trainee's ability to perceive and control the position and movement of their vehicle in confined spaces and while travelling in reverse. Proficient performance of these tasks includes knowing how to steer correctly, driving with confidence, maintaining the necessary clearance with all obstructions, and minimizing the time to complete each manoeuvre without rushing and without taking any unnecessary risks.

INSTRUCTION TO TRAINEE

Inform the trainee that they need to complete each backing maneuver. Make sure they are aware that they will be evaluated on all the sub-tasks they learned in training or that should be included each time they complete this maneuver.

Once the vehicle enters or re-enters the space, any forward movement is considered a pull-up. Timing begins at the point the vehicle reverses past the outer alley markers.

ASSESSMENT ELEMENTS

Judge the skill level of the trainee on each backing and parking manoeuvre through the main sub-tasks: set up, pull-ups, encroachment, final position, and elapsed time. Each sub-task has specific criteria for the number of allowable elements and error scoring. Do not score the trainee when they exit the vehicle to check position (as often as needed), subject to the elapsed time scoring.

Set up – includes the mirror check; getting out and making any mirror adjustments; looking behind the vehicle for clearances, obstructions, and hazards before starting to move in reverse; silencing entertainment and communication systems; activating warning flashers and sounding the horn.

Pull-up – any forward movement after beginning travel in reverse. Stopping without pulling forward is not considered a pull-up.

Encroachment – contacting any boundaries or positioning any part of the vehicle outside the boundaries of the space provided for the maneuver. Encroachment is considered equivalent to vehicular contact with any other vehicle, building, or fixed obstruction.

Final position – the point where the trainee indicates the maneuver to be complete. This will vary between maneuvers and based on the range being used for the skills demonstration.

Elapsed time – the time from start to completion of the maneuver. Since the demonstration is meant to confirm proficiency, an excessive amount of time indicates a lack of proficiency and will impact the score. Decide the maximum time allowed to complete the manoeuvre.



Off-Road Skill Assessment TASK 1.1 - Straight-line backing a tractor-trailer

Maneuver Space

This maneuver requires the trainee to back a vehicle a minimum distance of 30 meters in an “alley” space between 3.5 and 3.7 meters wide. The maneuver can also be performed at a loading dock or parking space with the same dimensions. The location will determine whether the trainee will have the option to drive forward through the space before reversing or aligning in front of it before reversing.

Use the details in the Error and Severity columns to complete a scoresheet for each trainee (score minor errors with a **1**, major errors with a **2**).

SUB-TASK	ERRORS	SEVERITY
SET UP		
Checks mirror set up.	Fails to check mirror set up.	MAJOR
Positions truck to start backing.	Fails to get vehicle into a good position to start backing.	MINOR
Exits the vehicle and check the path.	Fails to get out and check path before backing.	MAJOR
Activates warning flashers.	Fails to activate flashers.	MINOR
Silences audio systems.	Fails to silence audio systems.	MINOR
Opens windows.	Fails to open windows.	MINOR
Sounds the horn.	Fails to sound horn.	MINOR
Starts moving backwards at a walking pace.	Drives backward too quickly or too slowly.	MINOR
PULL UP		
Pulls up no more than {target value} to align it during the maneuver.	Pulls up more than {target value} to complete maneuver.	MINOR
Exits the vehicle and check the path as often as necessary.	Fails to get out of vehicle when it is necessary.	MAJOR
Responds to any stop signal from the evaluator.	Fails to notice or respond to a signal to stop.	MAJOR



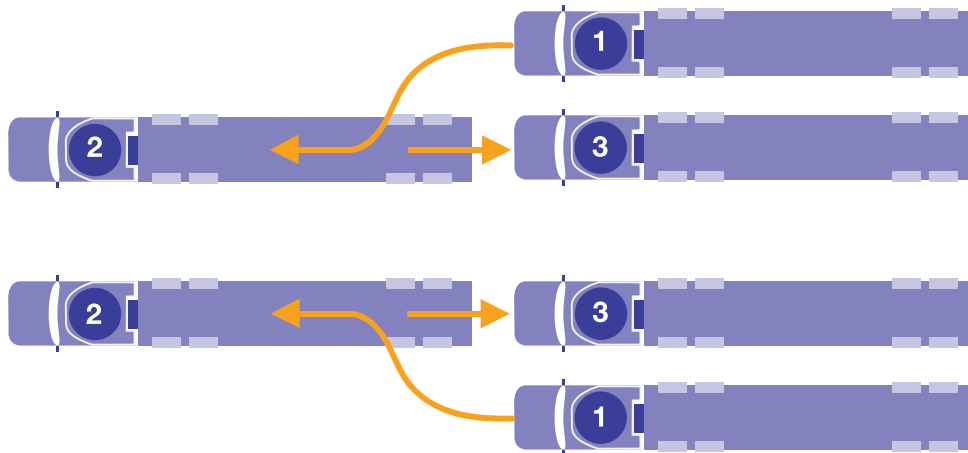
SUB-TASK	ERRORS	SEVERITY
ENCROACHMENT		
Stays entirely within the maneuver space.	Any part of the vehicle encroaches on the marked boundary or contacts any object.	MAJOR
FINAL POSITION		
Stops truck movement upon reaching the desired position (exiting the vehicle to check position and moving further backwards is acceptable).	Is too far from stop position.	MINOR
	Makes harsh contact with loading dock.	MAJOR
ELAPSED TIME		
<p>Completes the entire backing maneuver in a reasonable time.</p> <p>(The evaluator will need to determine whether excessive time is due to lack of proficiency {an error} or due to the trainee taking extra care {not an error})</p>	Does not have the driving proficiency to complete the maneuver in a reasonable time.	MAJOR



Off-Road Skill Assessment TASK 1.2 - Offset backing a tractor-trailer

Maneuver Space

This maneuver requires the trainee to pull forward out of one space and back into an adjacent space. The maneuver is from a space that is between 3.5 and 3.7 meters wide, and at least as long as the tractor-trailer, into an adjacent space of the same dimensions. The pull-up space in front of the two spaces described must be at least 1.5 times the length of the tractor-trailer. The maneuver can be performed from either side.



Use the details in the Error and Severity columns to complete a scoresheet for each trainee (score minor errors with a **1**, major errors with a **2**).

SUB-TASK	ERRORS	SEVERITY
SET UP		
Checks mirror set up.	Fails to check mirror set up.	MAJOR
Positions truck to start backing.	Fails to get vehicle into a good position to start backing.	MINOR
Exits the vehicle and checks the path.	Fails to get out and check path before backing.	MAJOR
Activates warning flashers.	Fails to activate flashers.	MINOR
Silences audio systems.	Fails to silence audio systems.	MINOR
Opens windows.	Fails to open windows.	MINOR
Sounds the horn.	Fails to sound horn.	MINOR

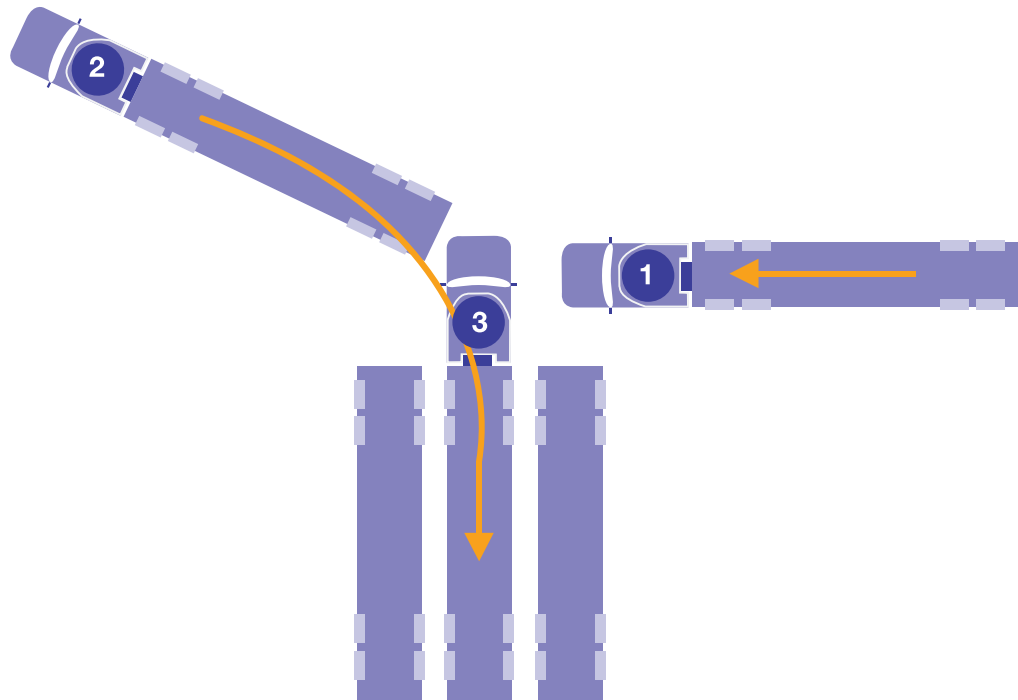
SUB-TASK	ERRORS	SEVERITY
Starts moving backwards at a walking pace.	Drives backwards too quickly or too slowly.	MINOR
PULL UP		
Pulls up the truck no more than {target value} to align it during the maneuver.	Pulls up more than {target value} to complete maneuver.	MINOR
Exits the vehicle and checks the path as often as necessary.	Fails to get out of vehicle when it is necessary.	MAJOR
Responds to any stop signal from the evaluator.	Fails to notice or respond to a signal to stop.	MAJOR
ENCROACHMENT		
Stays entirely within the maneuver space.	Any part of the vehicle encroaches on the marked boundary or contacts any object.	MAJOR
FINAL POSITION		
Stops truck movement upon reaching the desired position (exiting the vehicle to check position and moving further backwards is acceptable).	Is too far from stop position.	MINOR
	Makes harsh contact with loading dock.	MAJOR
ELAPSED TIME		
<p>Completes the entire backing manoeuver in a reasonable period.</p> <p>(The evaluator will need to determine whether excessive time is due to lack of proficiency {an error} or due to the trainee taking extra care {not an error}.)</p>	Does not have the driving proficiency to complete the maneuver in a reasonable period.	MAJOR



Off-Road Skill Assessment TASK 1.3 - Alley-dock backing a tractor-trailer

Maneuver Space

Maneuver is into a space that is between 3.5 and 3.7 meters wide, and at least as long as 2/3 the length of the tractor-trailer, starting with the vehicle positioned perpendicular to the space and with the front of the tractor directly in front of it. The pull-up space in front of the backing target space must be no deeper than the length of the vehicle. The maneuver can be performed from either side.



Use the details in the Error and Severity columns to complete a scoresheet for each trainee (score minor errors with a **1**, major errors with a **2**).

SUB-TASK	ERRORS	SEVERITY
SET UP		
Checks mirror set up.	Fails to check mirror set up.	MAJOR
Positions truck to start backing.	Fails to get vehicle into a good position to start backing.	MINOR
Exits the vehicle and checks the path.	Fails to get out and check path before backing.	MAJOR
Activates warning flashers.	Fails to activate flashers.	MINOR
Silences audio systems.	Fails to silence audio systems.	MINOR

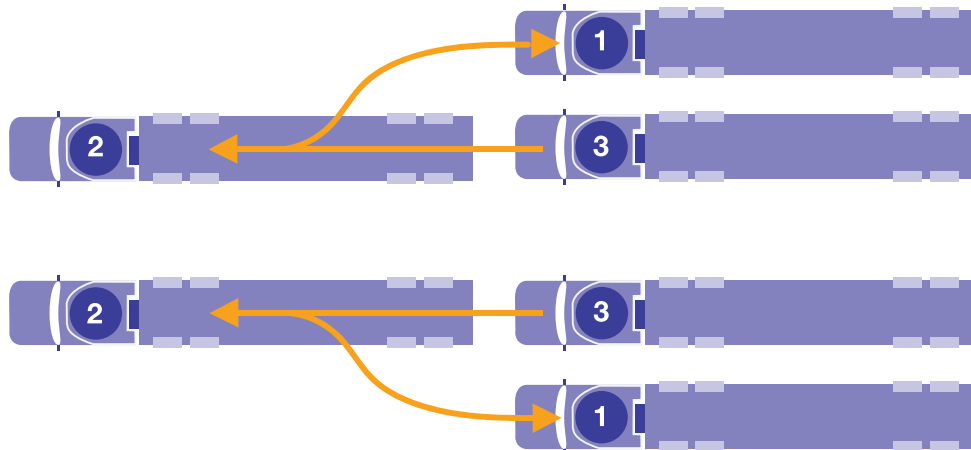
SUB-TASK	ERRORS	SEVERITY
Opens windows.	Fails to open windows.	MINOR
Sounds the horn.	Fails to sound horn.	MINOR
Starts moving backwards at a walking pace.	Drives backwards too quickly or too slowly.	MINOR
PULL UP		
Pulls up no more than {target value} to align it during the maneuver.	Pulls up more than {target value} to complete maneuver.	MINOR
Exits the vehicle and checks the path as often as necessary.	Fails to get out of vehicle when it is necessary.	MAJOR
Responds to any stop signal from the evaluator. Encroachment	Fails to notice or respond to a signal to stop.	MAJOR
ENCROACHMENT		
Stays entirely within the maneuver space.	Any part of the vehicle encroaches on the marked boundary or contacts any object.	MAJOR
FINAL POSITION		
Stops truck movement upon reaching the desired position (exiting the vehicle to check position and moving further backwards is acceptable).	Is too far from stop position.	MINOR
	Makes harsh contact with loading dock.	MAJOR
ELAPSED TIME		
Completes the entire backing manoeuver in a reasonable time. (The evaluator will need to determine whether excessive time is due to lack of proficiency {an error} or due to the trainee taking extra care {not an error}.)	Does not have the driving proficiency to complete the maneuver in a reasonable time.	MAJOR



Off-Road Skill Assessment TASK 1.4 - Parallel parking a tractor-trailer

Maneuver Space

Maneuver is into a space that is between 3.5 and 3.7 meters wide, and at least as long as 1.5 times the length of the tractor-trailer. The maneuver can be performed from either side.



Use the details in the Error and Severity columns to complete a scoresheet for each trainee (score minor errors with a **1**, major errors with a **2**).

SUB-TASK	ERRORS	SEVERITY
SET UP		
Checks mirror set up.	Fails to check mirror set up.	MAJOR
Positions truck to start backing.	Fails to get vehicle into a good position to start backing.	MINOR
Exits the vehicle and checks the path.	Fails to get out and check path before backing.	MAJOR
Activates warning flashers.	Fails to activate flashers.	MINOR
Silences audio systems.	Fails to silence audio systems.	MINOR
Opens windows.	Fails to open windows.	MINOR
Sounds the horn.	Fails to sound horn.	MINOR
Starts moving backwards at a walking pace.	Drives backwards too quickly or too slowly.	MINOR

SUB-TASK	ERRORS	SEVERITY
PULL UP		
Pulls up no more than { <i>target value</i> } to align it during the maneuver.	Pulls up more than {target value} to complete maneuver.	MINOR
Exits the vehicle and checks the path as often as necessary.	Fails to get out of vehicle when it is necessary.	MAJOR
Responds to any stop signal from the evaluator	Fails to notice or respond to a signal to stop.	MAJOR
ENCROACHMENT		
Stays entirely within the maneuver space.	Any part of the vehicle encroaches on the marked boundary or contacts any object.	MAJOR
FINAL POSITION		
Stops truck movement upon reaching the desired position (exiting the vehicle to check position and moving further backwards is acceptable).	Is too far from stop position.	MINOR
	Makes harsh contact with loading dock.	MAJOR
ELAPSED TIME		
<p>Completes the entire backing manoeuver in a reasonable time.</p> <p>(The evaluator will need to determine whether excessive time is due to lack of proficiency {an error} or due to the trainee taking extra care {not an error}.)</p>	Does not have the driving proficiency to complete the maneuver in a reasonable time.	MAJOR



Off-Road Skill Assessment TASK 2 - Tractor-trailer coupling and uncoupling

When operating articulating vehicles such as a tractor-trailer combination, frequent coupling and uncoupling of the vehicles becomes a routine part of the job. A systematic approach must be used for the uncoupling process that may vary based on the specific vehicles involved and the location where uncoupling is performed.

As vehicles and operational settings are different, you may be required to make some alterations or additions to the sub-tasks listed in this document. Use this guide as a base and add or alter it as appropriate. If changes are made, you and or your team may wish to review the NOS-O to ensure it continues to align with your updated version.

Off-Road Skill Assessment TASK 2.1 - Coupling a tractor-trailer

Use the details in the Error and Severity columns to complete a scoresheet for each trainee (score minor errors with a **1**, major errors with a **2**).

SUB-TASK	ERRORS	SEVERITY
1. INSPECT FIFTH WHEEL		
Inspects the condition of the fifth wheel, connecting lines, and connectors while outside the tractor.	Fails to inspect the condition of the fifth wheel.	MAJOR
Checks the position of the fifth wheel release handle and latch.	Fails to check the status of the fifth wheel latch.	MAJOR
2. ALIGN TRACTOR TO TRAILER		
Releases tractor parking brakes.	Fails to release tractor parking brakes.	MINOR
Reverses the tractor slowly toward the trailer.	Fails to reverse slowly.	MINOR
Uses the mirrors to get the tractor in a straight line with the trailer.	Fails to use mirrors while reversing.	MAJOR
Stops when the fifth wheel is just ahead of the trailer.	Fails to stop when fifth wheel is just ahead of the trailer.	MINOR

SUB-TASK	ERRORS	SEVERITY
3. SECURE THE TRACTOR		
Confirms transmission is in neutral.	Fails to position tractor the correct distance from the trailer.	MAJOR
Confirms tractor parking brakes are applied.	Fails to align tractor with the trailer (so that trailer kingpin is aligned to contact only the fifth wheel guide ramps).	MAJOR
4. CHECK ALIGNMENT		
Exits tractor and checks distance and alignment.	Fails to position tractor the correct distance from the trailer.	MINOR
Positions the tractor the correct distance from the trailer.	Fails to align tractor with the trailer (so that trailer kingpin is aligned to contact only the fifth wheel guide ramps).	MAJOR
Re-positions tractor if required.	Fails to reposition tractor.	MINOR
5. CHECK TRAILER HEIGHT		
Sets trailer height correctly upper coupler must be set to make contact with the bottom half of the fifth wheel plate).	Fails to set trailer height correctly.	MAJOR
Adjusts trailer height using landing gear.	Fails to adjust trailer height using landing gear.	MINOR
6. INSPECT TRAILER		
Inspects the condition of the trailer upper coupler and kingpin, and trailer connectors.	Fails to inspect the condition of the trailer upper coupler.	MAJOR
	Fails to inspect the kingpin.	MAJOR
7. CHOCK WHEELS		
Confirms chocks are in place at trailer wheels.	Fails to check wheel chocks.	MINOR
8. ENGAGE FIFTH WHEEL		
Reverses slowly under the trailer.	Fails to reverse slowly.	MINOR



SUB-TASK	ERRORS	SEVERITY
Uses mirrors to confirm proper alignment and trailer stability.	Fails to monitor trailer position using mirrors.	MINOR
Gently but firmly engages the fifth wheel.	Fails to engage fifth wheel.	MAJOR
Listens for and feels the fifth wheel latch into its locked position.	Fails to have kingpin align correctly with the fifth wheel.	MAJOR
9. TEST FIFTH WHEEL		
Attempts to move the tractor forward to confirm the fifth wheel is locked.	Fails to test that the fifth wheel is locked.	MAJOR
Places transmission in neutral.	Fails to place transmission in neutral.	MAJOR
Applies tractor parking brake.	Fails to apply parking brake.	MAJOR
10. CONFIRM FIFTH WHEEL LOCK		
Exits the vehicle and visually confirms the fifth wheel is locked by checking the fifth wheel contact and release handle position.	Fails to exit the vehicle to visually check the release handle position.	MAJOR
Gets under the trailer to visually check the closed position of the latch or locks.	Fails to get into a position under the trailer to visually check that the fifth wheel is in the closed position.	MAJOR
11. CONNECT AIR AND ELECTRICAL SYSTEMS		
Inspects the condition of the trailer air and electrical connections.	Fails to inspect the condition of the trailer air and electrical connections.	MAJOR
Connects the air and electrical lines properly.	Fails to connect the air and electrical lines properly.	MAJOR
12. RAISE LANDING GEAR		
Raises trailer landing gear fully and stows handle into its retainer.	Fails to raise trailer landing gear fully.	MAJOR
	Fails to stow landing gear handle properly.	MINOR



SUB-TASK	ERRORS	SEVERITY
13. CHECK AIR BRAKE SYSTEM		
Checks and adjusts air pressure if needed.	Fails to get air pressure into normal operating range.	MAJOR
Starts the engine if necessary to raise air pressure to normal operating range.	Fails to raise air pressure to normal operating range when required.	MINOR
Supplies air to trailer with the trailer supply valve.	Fails to supply air to trailer system.	MAJOR
Monitors the air pressure gauges and confirms they show normal pressure levels.	Fails to check for or establish normal air pressure.	MAJOR
Shuts engine off.	Fails to shut engine off.	MINOR
Listens for air leakage at supply gladhand.	Fails to listen for supply gladhand leakage with the engine shut off.	MAJOR
Applies service brakes.	Fails to apply service brakes.	MINOR
Listens for air leakage at the service gladhand.	Fails to listen for service gladhand leakage with the engine shut off. Note: trainee does not need to exit the tractor to check for leaks at the gladhand connections.	MAJOR
Removes wheel chocks.	Fails to remove wheel chocks.	MINOR
Tests service brake reaction by driving slowly forward and applying brakes.	Fails to test brakes properly.	MAJOR



Off-Road Skill Assessment TASK 2.2 - Uncoupling a tractor-trailer

Use the details in the Error and Severity columns to complete a scoresheet for each trainee (score minor errors with a **1**, major errors with a **2**).

SUB-TASK	ERRORS	SEVERITY
1. SELECT LOCATION		
Selects a location that is suitable for dropping the trailer.	Fails to know approximate trailer weight.	MINOR
2. PARK THE TRAILER		
Positions the trailer with the tractor as straight as possible.	Has tractor at an unnecessary angle to the trailer.	MAJOR
3. SECURE TRACTOR AND TRAILER PARKING BRAKES		
Confirms that the tractor and trailer are secured by application of the parking brakes.	Fails to confirm application of, or to apply, tractor brakes.	MAJOR
	Fails to confirm application of, or to apply, trailer brakes.	MAJOR
Confirms transmission is in neutral	Fails to confirm transmission is in neutral.	MAJOR
4. SET TRAILER SUSPENSION		
Operates trailer air suspension controls as needed.	Does not know how to operate suspension controls (when equipped).	MAJOR
5. CHOCK WHEELS		
Confirms that wheel chocks are properly in place or positions chocks at the trailer wheels.	Fails to properly place wheel chocks or check that wheel chocks are properly in place.	MINOR
6. SUPPORT LANDING		
Checks ground condition and uses support if needed.	Fails to determine the trailer loaded condition or weight.	MINOR
Confirms whether the trailer is loaded or empty and its approximate weight.		

SUB-TASK	ERRORS	SEVERITY
When ground conditions are soft, places supports under the landing gear.	Fails to place supports under the landing gear when ground condition is soft.	MAJOR
7. LOWER LANDING GEAR		
Lowers the trailer landing gear until it makes contact with the ground (or is just above the ground), but does not raise the trailer from the fifth wheel.	Has trailer landing gear more than 2cm from the ground.	MAJOR
	Lowers the landing gear so far that a gap appears between the fifth wheel and trailer upper coupler.	MAJOR
8. STOW LANDING GEAR HANDLE		
Places landing gear in low range and stows handle.	Fails to place landing gear handle into storage location	MINOR
9. REMOVE AIR AND ELECTRICAL CONNECTIONS		
Disconnects air and electric lines. <i>Note: Can be done before or after unlocking fifth wheel.</i>	Fails to disconnect one or more lines.	MAJOR
Secures air and electric lines.	Fails to secure one or more lines. <i>Note: The lines can be placed into storage receptacles or temporarily secured onto tractor using straps or similar devices.</i>	MINOR
10. UNLOCK FIFTH WHEEL LATCH		
<i>Note: You can pull directly on the fifth wheel handle or use a tool to reach the release handle.</i>	Fails to unlock fifth wheel.	MINOR
11. DISENGAGE FIFTH WHEEL		
Enters tractor, starts the engine and drives slowly forward in lowest gear to release fifth wheel. Stops when the fifth wheel lower coupler is fully out from under the trailer, but the tractor frame is still under the front of the trailer.	Drives forward too little or too far <i>Note: The fifth wheel must no longer contact the trailer and a portion of the tractor frame must still be under the trailer.</i>	MINOR
Places transmission in neutral. Applies tractor parking brake.	Fails to place transmission in neutral or apply parking brake.	MINOR



SUB-TASK	ERRORS	SEVERITY
Shuts off engine (not always necessary).	Fails to shut off engine.	MINOR
12. DISENGAGE FIFTH WHEEL WITH SUSPENSION DROP (OPTIONAL)		
Drives slowly forward just far enough to release the fifth wheel from the kingpin.	Drives forward too quickly.	MINOR
Drops the suspension.	Fails to drop the suspension.	MINOR
Stops when tractor frame is still under trailer.	Fails to stop when tractor frame is still under trailer.	MINOR
13. INSPECT TRAILER		
Exits the tractor and confirms that trailer and landing gear are stable and secure.	Fails to exit tractor to confirm trailer security.	MINOR
14. CLEAR THE TRAILER		
Re-enters tractor and drives forward slowly until tractor is clear of trailer.	Drives forward too quickly.	MINOR





© Trucking HR Canada 2024. All rights reserved.

All rights reserved. The use of any part of this publication, whether it is reproduced, stored in a retrieval system, or transmitted in any form or by any means (including electronic, mechanical, photographic, photocopying or recording), without the prior written permission of the Trucking Human Resources Canada, is an infringement of copyright law.

truckinghr.com